

**PROJECT  
ENVIRONMENTAL, HEALTH, SAFETY & SECURITY  
TOOL©**

**OF MEDIUM AND LARGE SCALE CONSTRUCTION PROJECTS**

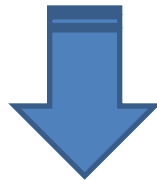
**PROCURED BY**

***- INSERT COMPANY NAME -***

***- insert name & date -***

# THE NEED

- multiple managerial requirements of safety due to the geographical and cultural spread of works
- numerous technical constraints due to the different types of works executed
- need to maintain the high level approach on safety within the Company (Group)



necessitate the application of a structured approach on the managerial provisions for controlling the Environmental, Health, Safety and Security (EHSS) issues that arise

# SCOPE

All projects in which the Company (Group) is involved during the whole project life-cycle:

- pre-construction phase
- construction phase
- operation & maintenance phase

# AIMS & OBJECTIVES

Develop specific management tools which can:

- assist in identifying and evaluating the relevant EHSS issues
- point towards selecting suitable measures for controlling the EHSS issues identified
- reduce the cost of safety management
- create, maintain and utilise a corporate database of EHSS issues based on previously acquired experience and knowledge

# PHASE A: PRE-CONSTRUCTION

- Stage A1: Pre-planning & feasibility studies
- Stage A2: Planning investigation
- Stage A3: Development of schematic design (basic design)
- Stage A4: Detailed design
- Stage A5: Production of construction documents (specifications, drawings, etc)
- Stage A6: Procurement of Contract documents – contractors selection

# PHASE B: CONSTRUCTION

- Stage B1: Pre-mobilization
- Stage B2: Site mobilization
- Stage B3: Execution
- Stage B4: Pre-commissioning period – start-up
- Stage B5: Handing/taking over
- Stage B6: Demobilization

# PHASE C: OPERATION & MAINTENANCE

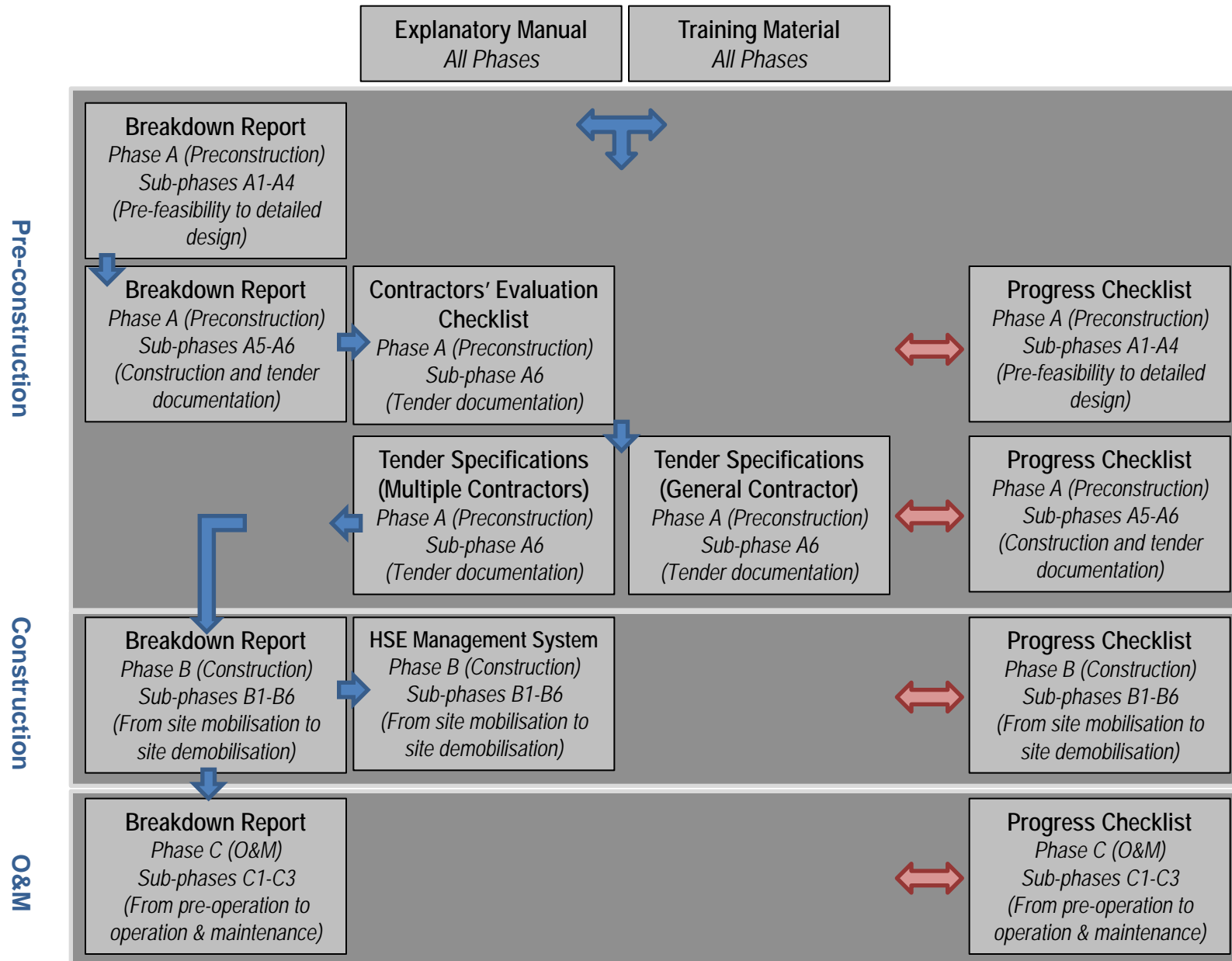
- Stage C1: Pre-operation (Commissioning)
- Stage C2 Guarantee period
- Stage C3 O&M
  - Sub-stage C3.1: Normal
  - Sub-stage C3.2: Repairs
  - Sub-stage C3.3: Changes in need
  - Sub-stage C3.4: Changes in technology
  - Sub-stage C3.5: Other Business

# METHODOLOGY

- Identify EHSS issues with potential impact to each Phase
- Support via a standard document/provision
- Define minimum requirements and specifications/standards
- Define involve entities/function (internal & external)
- Action plan check list
- Provide supportive and standardised documentation



# STRUCTURE & MAIN DELIVERABLES



# FINAL LAYOUT (BREAKDOWN REPORT)

- Issues cover risks or hazards or key elements/ concerns/requisites with direct H&S impact
- Provisions (may be more than one for each issue)
  - Minimum Requirements (refer to each provision)
- Specifications (refer to each issue)
- Involved entities (refer to each issue)
  - Company (Group)
  - External
- Required Actions (refer to each provision) are now included in the same view (previously in separate file)

ISSUE (RISK/ HAZARDS) (1)	PROVISION (2)	MINIMUM REQUIREMENTS (3)	SPECIFICATION (4)	INVOLVEMENT BY				REQUIRED ACTIONS DESCRIPTION (9)
				COMPANY (5)	SPECIFIC (6)	EXTERNAL (7)	SPECIFIC (8)	
C3.07 Security	Plant Security Plan	Security philoWork Method Statement Security organogram	National laws and standards Group Standards	Technical dept' Operator		Security Consultant Local Authorities Greek Embassy		Staffing
C3.07 Security	Plant Security Plan							Dressing
C3.07 Security	Plant Security Plan	Roles and responsibilities	Insurers requirements					Training security staff
C3.07 Security	Plant Security Plan	Fencing	Financing bodies requirements					Security operation procedure
C3.07 Security	Plant Security Plan	CCTV systems						Fencing completed
C3.07 Security	Plant Security Plan	Gate arrangements						CCTV installed and tested
C3.07 Security	Plant Security Plan	In/Out procedure - people						Gate facilities completed
C3.07 Security	Plant Security Plan	In/Out procedure - equipment						Fencing completed
C3.07 Security	Plant Security Plan	In/Out procedure - vehicles						CCTV installed and tested
C3.07 Security	Plant Security Plan	In/Out procedure - materials						Gate facilities completed
C3.07 Security	Plant Security Plan	Patrols						Confirm signing
C3.07 Security	Plant Security Plan	Signing requirements						In/Out software
C3.07 Security	Plant Security Plan	Nearby activities						In/Out registers
C3.07 Security	Plant Security Plan	Nearby communities						Consider in the induction training
C3.07 Security	Plant Security Plan	Extreme cases/historical data						Procedure for sensitive visits
C3.07 Security	Plant Security Plan	Driving outside						Procedure for sensitive substances
C3.07 Security	Plant Security Plan	Site approach						Consider in the contracts and orders
C3.07 Security	Plant Security Plan	Personnel Security General Instructions						Personnel Security General Instructions
C3.07 Security	Plant Security Plan	Training						Plant personnel awareness training
C3.07 Security	Safe Pass Procedure	Employees						Safe pass or equivalent system
C3.07 Security	Safe Pass Procedure	Contractors						Plant personnel awareness training
C3.07 Security	Safe Pass Procedure	Visitors						Consider in the emergency plans
C3.07 Security	Safe Pass Procedure	Vehicles						Consider in the crisis management procedure
C3.07 Security	Safe Pass Procedure	Trucks						Consider in the disciplinary procedure
C3.07 Security	Safe Pass Procedure	Pass Card/Badge						Consider in the Plant Master Plan
C3.07 Security	Safe Pass Procedure	HSE information						

# LIMITATIONS

- each project can have particularities which can not always be prescribed
- management tools require engineering judgement
- management tools require engineering control
- management tools can assist in focusing efforts towards the right direction but cannot always prescribe the exact solution
- initial training and capital in general is required for the management tools to be integrated into the day-to-day business of the Company (Group)
- need for both central and regional administration of the database